

Kart CA1 Bambini (Art. 1018)

Dok-Art. 62018

Die jeweils aktuelle Version ist verfügbar unter / latest version available at:
http://pdf.mach1kart.de/man_62018.pdf



Hetschel GmbH & Co. KG
Daimlerstr. 16-18
74336 Meimsheim (GERMANY)
www.mach1kart.de

Wir bitten um Verständnis, dass es wegen unterschiedlicher Ausstattungsvarianten zu Abweichungen in der zeichnerischen Darstellung kommen kann.
Bei Rückfragen wenden Sie sich bitte an technik@mach1kart.de
We ask for understanding that figures can differ because of equipment version. With queries turn to support@mach1kart.de

Technische Änderungen vorbehalten. Schutzvermerk nach DIN ISO 16016 beachten.
Copyright © 2007 Hetschel GmbH & Co. KG. All rights reserved.

Rahmen CA1 / Frame CA1

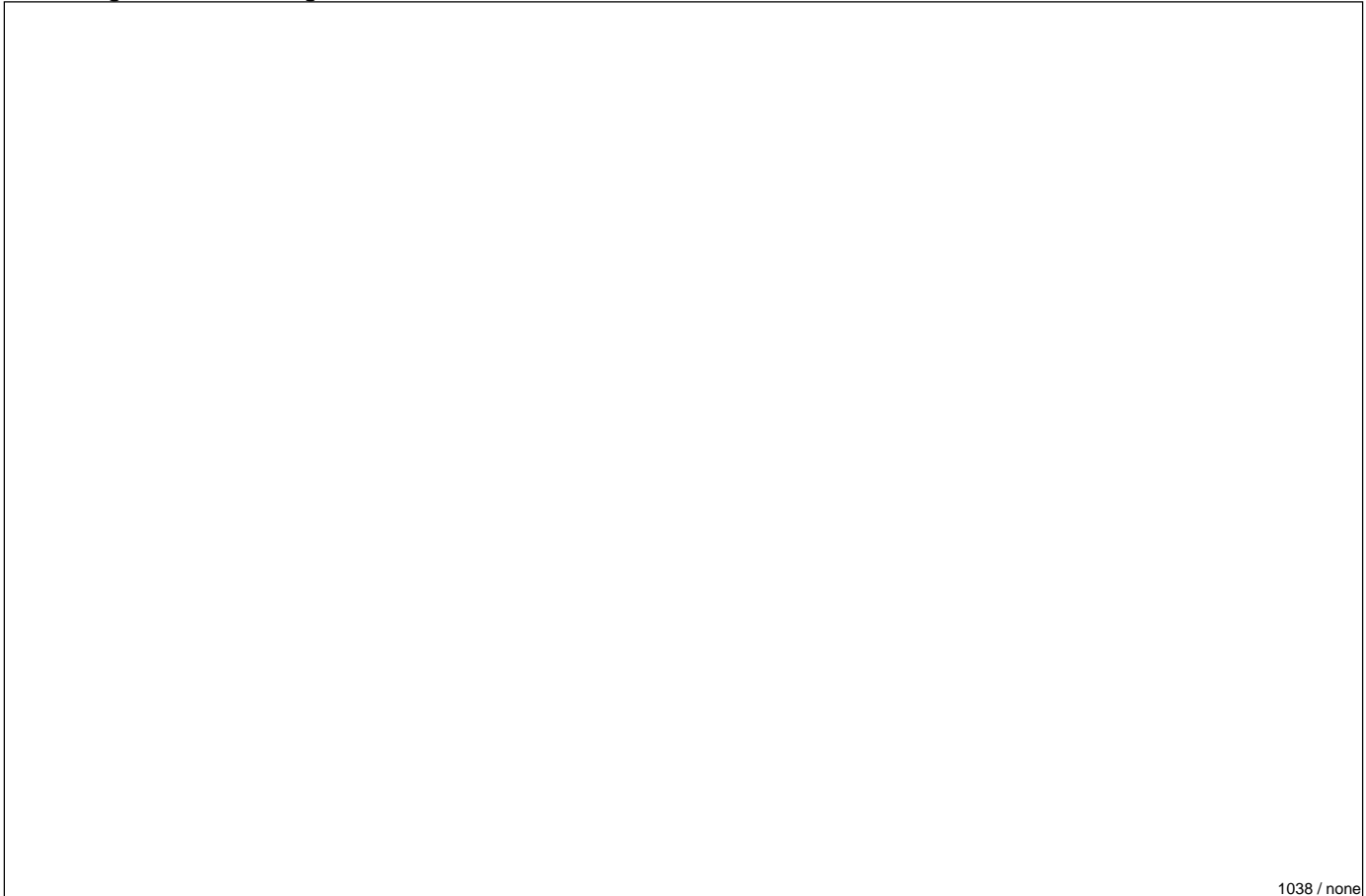


1037 / none

Nr.	Art.	Bezeichnung	Description	Menge/Pcs.
0	5015	Klemme Stabi ø 25mm, 50mm lg. Alu, BA	stabi clamp alu ø 25x50 long	2
1	1798	Schutzbügel vo., BA	front bumper, BA	1
3	2680	MLF-Schraube M6x16	cross recessed head screw M6x16	2
4	1038	Rahmen CA1 B01, 900mm Radstand, BA	frame BA, wheelbase 900mm	1
5	2645	Scheibe ø 6mm groß	washer ø 6mm, big	4
6	2640	Mutter M6 stop DIN 985	nut M6 stop DIN 985	8
7	1906	Gaspedal kurz, BA	accelerator pedal short, BA	1
8	1910	Pedalschraube M8x50 Inbus sonder	pedal screw M8x50 spezial	2
9	1930	Gaspedalrückholfeder	return spring, accelerator pedal	1
10	2700	Mutter M8 stop DIN 985	nut M8 stop DIN 985	2
11	1905	Bremspedal kurz, BA	brake pedal short, BA	1
12	2680	MLF-Schraube M6x16	cross recessed head screw M6x16	6
13	2551	Scheibe 6,5x12x1 Nylon	nylon washer 6,5x12x1	2
14	2550	Scheibe 6,5x20x2 Gummi schwarz	rubber washer 6,5x20x2, black	6
15	2645	Scheibe ø 6mm groß	washer ø 6mm, big	4
17	2161	Achsschenkel re.	stub axle 100 right	1
18	2160	Achsschenkel li.	stub axle 100 left	1
19	2810	Mutter M12 stop	nut M12 stop	2
20	2106	Dist.Hülse 17x25x7 Alu	spacer sleeve 17x25x7 alu	10
21	2133	Radiusscheibe ø 17x25x3	radius washer ø 17x25x3	2
22	5060	Tank 3,0 Ltr., BA	fuel tank 3l., bambini	1
24	2313	Tankdeckel, 8,5Ltr., Tank #2316	tank cap for 8,5 l	1
25	2325	O-Ring 29,2x3, Tankdeckel 8,5Ltr.	o-ring 29,2x3 for fuel cap 8,5l	1

weiter / continued...

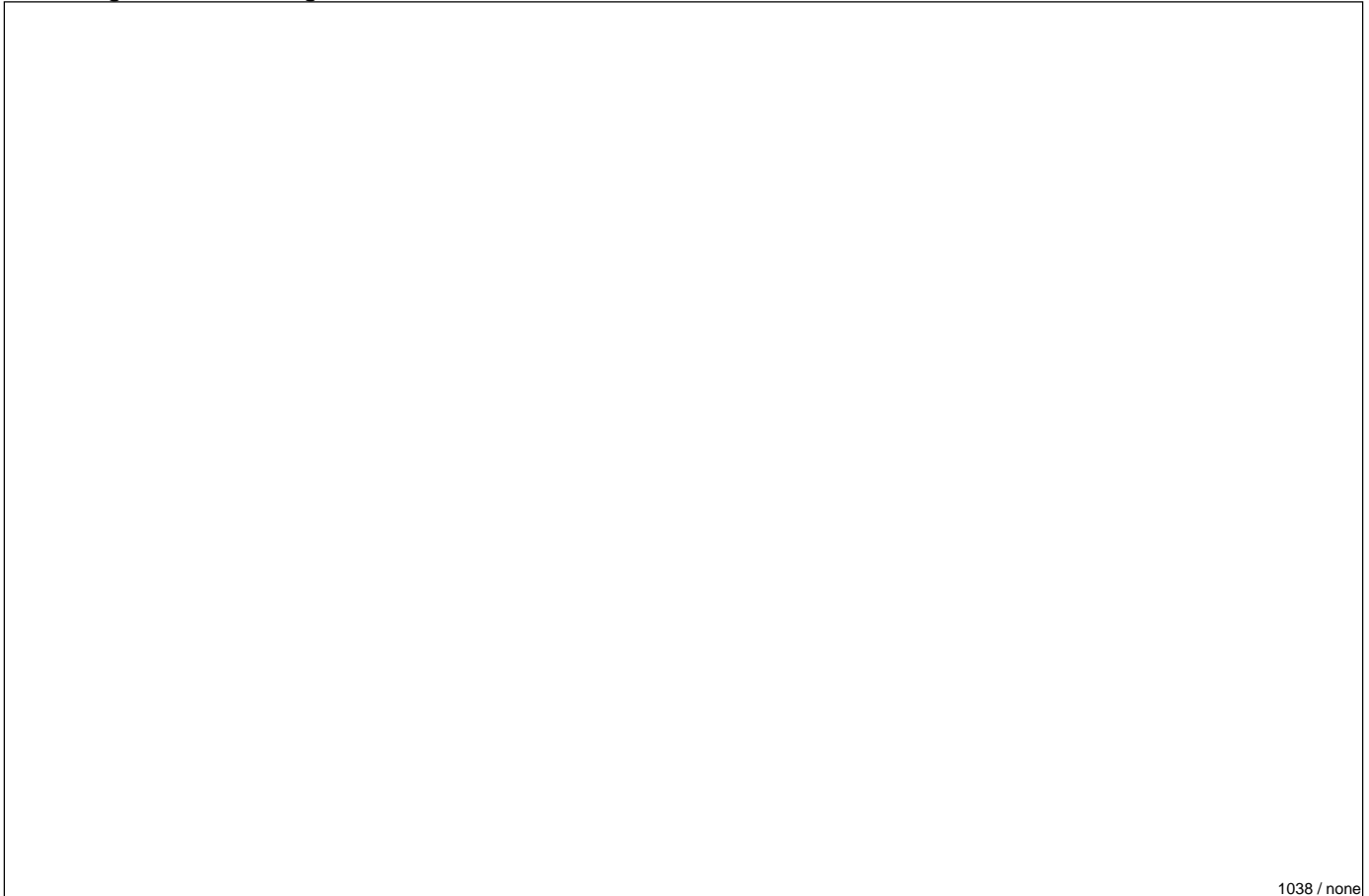
Lenkung CA1 / Steering CA1



1038 / none

Nr.	Art.	Bezeichnung	Description	Menge/Pcs.
1	2003	Lenkrad flat-top ø 320mm	steering wheel "flat top" ø 320mm	1
2	2680	MLF-Schraube M6x16	cross recessed head screw M6x16	3
3	2040	Lenkradnabe ø 20 gerade	steering wheel hub ø 20 direct	1
4	2039	Lenkradnabe ø 20 8° schräg	steering wheel hub ø 20, 8° slant	1
5	2640	Mutter M6 stop DIN 985	nut M6 stop DIN 985	1
6	2750	Schraube M8x65 Inbus	hex socket head cap screw M8x65	1
7	2709	Scheibe ø 8,4mm vz. DIN 125	washer ø 8,4mm zinc coated, DIN 125	1
8	2030	Lenkteil ø 20 Kunststoff schwarz	steering part ø 20 plastic black	1
9	1508	Mutter M8 mit Bund selbstsichernd	union nut M8 self locking	1
10	2029	Stelling, ø 20, Lenkstange	collar, ø 20 for steering rod	1
11	2260	Kugellager 608 2Z, 8x22x7	ball bearing 608 2Z, 8x22x7	4
12	2257	Dist.Hülse 8,2x12x24	spacer tube 8,2x12x24	2
13	2764	MLS-Schraube M8x45	slotted countersunk head screw M8x45	2
14	2091	Dist.Hülse 9x12x5	space sleeve 9x12x5	4
15	2092	Dist.Hülse 9x12x9	space sleeve 9x12x9	2
16	2700	Mutter M8 stop DIN 985	nut M8 stop DIN 985	4
19	2083	Gelenkkopf M8 außen li.	rod end M8 outside left	2
20	2085	Mutter M8 Linksgewinde schwarz	nut M8 left-handed thread, black	2
21	2082	Gelenkkopf M8 außen re.	rod end M8 outside right	2
22	2084	Mutter M8 vz.	nut M8, zinc coated	2
23	2761	Schraube M8x30 Inbus DIN 6912	hex socket head cap screw M8x30 DIN 6912	2
24	2090	Dist.Hülse 9x12x3	space sleeve 9x12x3	2
25	2042	Sicherungsring I23 DIN 472	retaining ring I23 DIN 472	2

weiter / continued...

Kart CA1 Bambini /Lenkung CA1 / *Steering CA1*

1038 / none

Nr.	Art.	Bezeichnung	Description	Menge/Pcs.
26	2041	Kugelgelenkkopf 10mm, Lenkung	<i>universal joint head 10mm, steering</i>	1
27	2033	Dist.Hülse 10x14x4	<i>spacer sleeve 10x14x5</i>	1
28	2770	Mutter M10 stop	<i>nut M10 stop</i>	1
29	2265	Schraube M8x90 Inbus 12.9	<i>hex. socket head cap screw M8x100 12.</i>	2
30	2259	Zentrierscheibe 8x20x9	<i>center shim 8x20x9</i>	4
31	2258	Dist.Scheibe 8x20x5,5	<i>spacer washer 8x20x5,5</i>	4
32	2256	Dist.Scheibe 8x20x4	<i>spacer washer 8x20x4</i>	4
34	2161	Achsschenkel re.	<i>stub axle 100 right</i>	1
35	2160	Achsschenkel li.	<i>stub axle 100 left</i>	1
36	2264	Exzenter, Nachlaufverstellung 2°	<i>eccentric, caster dissimulation 2°</i>	2
37	2079	Sicherungsscheibe 8mm, Gelenkkopf	<i>washer 8mm for rod end</i>	2
38	2035	Lenkstange ø 20 490mm lg.	<i>steering rod ø 20 490mm long</i>	1

Kart CA1 Bambini /

Heck CA1 / Rear CA1

--	--	--	--	--

1039 / none

Nr.	Art.	Bezeichnung	Description	Menge/Pcs.
3	1811	Klemme Stabi ø 28mm, 50mm lg. Alu	<i>stabi clamp ø 28mm, 50mm long alu</i>	2
4	1799	Stabi.Rohr hi., 28x460, BA	<i>stabi tube rear, 28x460, BA</i>	1
5	1814	Bügel, Auspuffhalter FMK4/5	<i>bracket, exhaust support FMK 4/5</i>	1
6	2740	Schraube M8x16 Inbus	<i>hex socket head cap screw M8x16</i>	1
7	1870	Gummimetalllager M6	<i>bump rubber M6</i>	2
8	1840	Auspuffhalter	<i>exhaust holder</i>	1
9	2640	Mutter M6 stop DIN 985	<i>nut M6 stop DIN 985</i>	2
10	1850	Feder 96mm lg., Auspuff	<i>spring 96mm long, exhaust</i>	2
11	2668	Schraube M6x35 Inbus	<i>hex socket head cap screw M6x35</i>	2
12	1823	Befestigungsschelle ø 20	<i>fastening clamp ø 20</i>	2
13	2380	Nummernschild gelb	<i>number plate yellow</i>	1
13	2381	Nummernschild grün	<i>number plate green</i>	1
13	2382	Nummernschild weiß	<i>number plate white</i>	1
13	2383	Nummernschild blau	<i>number plate blue</i>	1
13	2384	Nummernschild rot	<i>number plate red</i>	1
14	1830	Bef.Teil ø 28mm, Sz.	<i>mounting part, rear bumper ø 28mm, set</i>	1
20	2341	Kettenschutz, 125	<i>chain guard, 125</i>	1
21	2645	Scheibe ø 6mm groß	<i>washer ø 6mm, big</i>	2
22	2680	MLF-Schraube M6x16	<i>cross recessed head screw M6x16</i>	2
23	2351	Bügel, Kettenschutzhalter	<i>bow for chain guard</i>	1
24	1638	Kettenspannschraube mit Kunststoffteil	<i>chain clamping screw with plastic part</i>	1

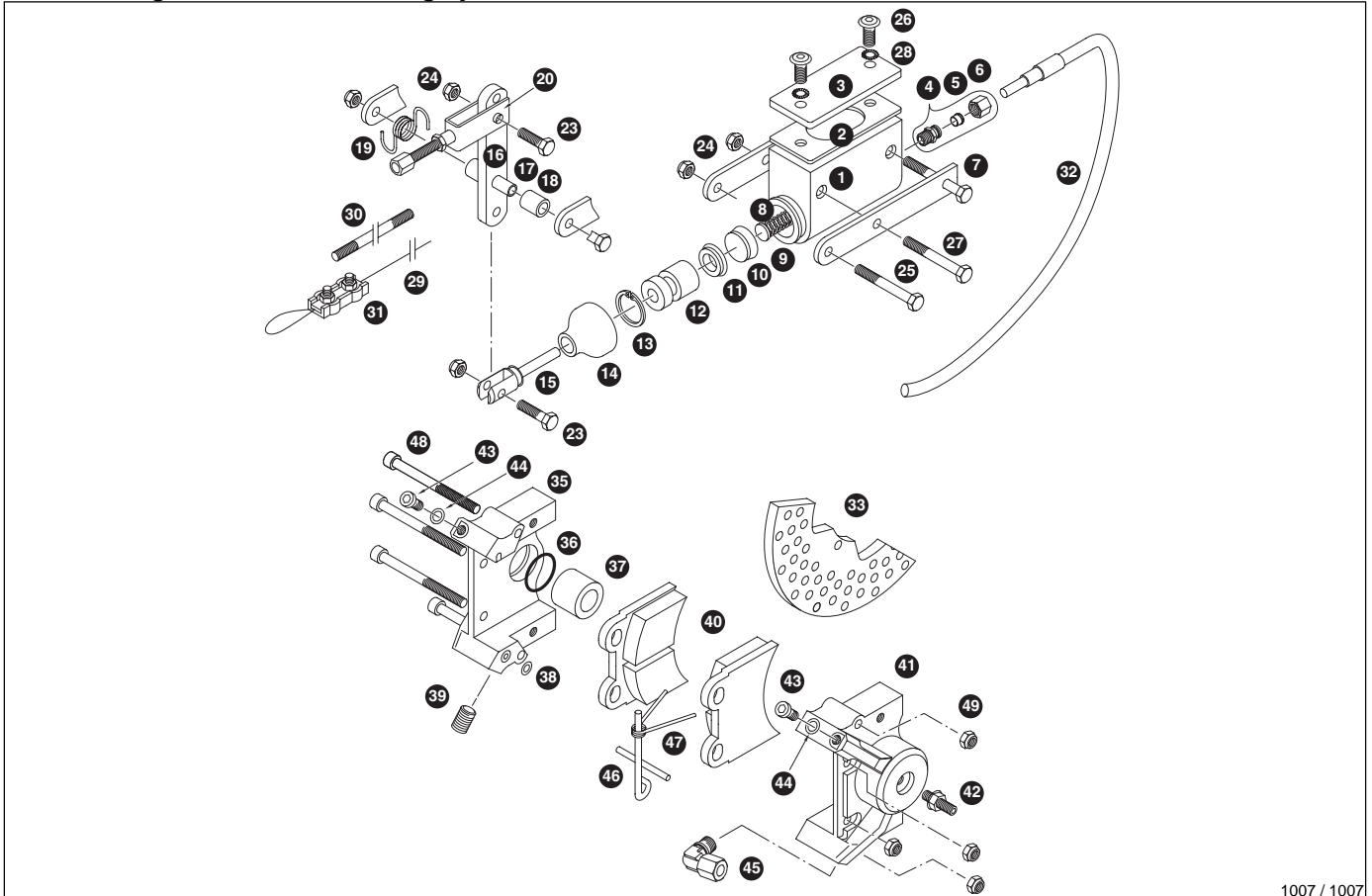
Hinterachse 25 CA1 / Rear axle 25 CA1



1040 / none

Nr.	Art.	Bezeichnung	Description	Menge/Pcs.
2	1560	Hinterachskeil 6x50, 6mm dick	rear axle key 6x5, 6mm thick	4
3	1551	Radstern ø 25mm, 30mm lg. Alu	rear hub ø 25, 30mm long, alu	2
4	2743	Schraube M8x30 Inbus	hex socket head cap screw M8x30	1
6	1580	Kettenradträger ø 25mm Alu	chain wheel holder ø 25mm, alu	1
7	2651	Schraube M6x20 SK	hexagon head screw M6x20	6
8	1525	Lagerschale ø 25mm höhenverst., Alu	bearing seat ø 25mm, height adjustable	3
11	2203	Bremsscheibe vo. 3-Loch, FIA1 / BA	brake disc front, 3-holes FIA1/bambini	1
12	2668	Schraube M6x35 Inbus	hex socket head cap screw M6x35	1
14	2686	Schraube M6x18 Inbus DIN 7984	hex socket head cap screw M6x18 DIN 7984	3
16	2642	Mutter M6 Metall-stop	nut M6 metal stopp	3
18	2709	Scheibe ø 8,4mm vz. DIN 125	washer ø 8,4mm zinc coated, DIN 125	3
20	2744	Schraube M8x35 Inbus	hex socket head cap screw M8x35	6
22	2668	Schraube M6x35 Inbus	hex socket head cap screw M6x35	2
23	2638	Sperrkantring ø 6mm	lock ring ø 6mm	2
28	1532	Hinterachslager ø 25mm	rear axle bearing ø 25mm	3
29	1537	Sicherungsschraube M6x0,75, 6mm lg.	safety screw M6x0,75x6mm	6

Bremsanlage VHR-Mini / Braking system VHR-Mini

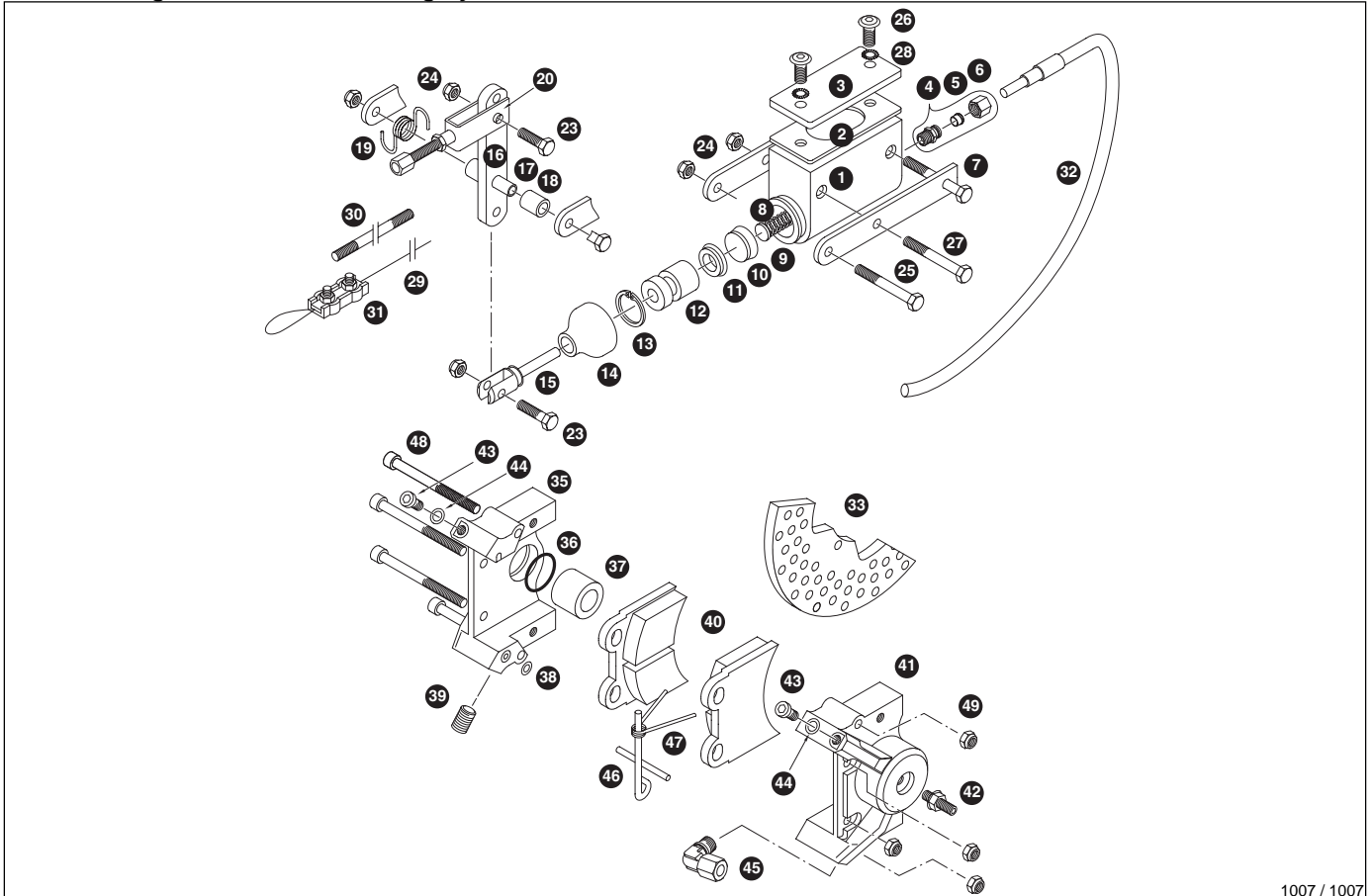


1007 / 1007

Nr.	Art.	Bezeichnung	Description	Menge/Pcs.
1	1230	Hauptbremszylinder 100/125	brake master cylinder 100-125cc	1
2	1320	Dichtung, Deckel Hauptbremszylinder	gasket for cap brake master cylinder	1
3	1330	Deckel, Hauptbremszylinder	cap, main brake cylinder	1
4	1183	Verschraubung M10x1, gerade	straight screwing M10x1	1
5	1186	Schneidring	cutting ring	1
6	1184	Überwurfmutter M10x1	throw over nut M10x1	1
7	1245	Hebellagerung	lever bearing	2
8	1260	Druckfeder	pressure spring	1
9	1261	Tellerscheibe, Feder #1260	flat wheel for spring #1260	1
10	1270	Topfmanschette	hydraulic seal	1
11	1280	Ringmanschette	ring seal	1
12	1250	Kolben, Bremszylinder	piston for brake cylinder	1
13	1290	Sicherungsring I22 DIN 472	retaining ring I22 DIN 472	1
14	1400	Faltenbalg	bellows	1
15	1246	Druckstück	pressure piece	1
16	1240	Hebel	lever	1
17	1242	Dist.Hülse 30mm lg.	spacer sleeve 30mm	1
18	1243	Dist.Stück 12mm lg.	spacer 12mm	1
19	1244	Feder, Hebel	spring for lever	2
20	1241	Gelenkteil, Zug	hinge for pass	2
23	2652	Schraube M6x25 SK	hexagon head screw M6x25	1
24	2640	Mutter M6 stop DIN 985	nut M6 stop DIN 985	3
25	2655	Schraube M6x45 SK	hexagon head screw M6x45	1

weiter / continued...

Bremsanlage VHR-Mini / Braking system VHR-Mini



1007 / 1007

Nr.	Art.	Bezeichnung	Description	Menge/Pcs.
26	2680	MLF-Schraube M6x16	cross recessed head screw M6x16	2
27	2656	Schraube M6x50 SK	hexagon head screw M6x50	2
28	2646	Schnorr-Sicherung ø 6mm	locking washer ø 6mm	2
29	1101	Bremszug, hydr. Bremse	brake cable assembly hydraulic	2
30	1103	Bremsstange 375mm lg.	brake rod, 375mm	1
31	2572	Seilklemme 3mm, Duplex	cable casing 3mm, Duplex	1
32	1177	Bremsleitung 645mm lg.	brake line 645mm	1
33	2203	Bremsscheibe vo. 3-Loch, FIA1 / BA	brake disc front, 3-holes FIA1/bambini	1
35	2207	Bremshälfte hydr. li. nackt, BA	brakehalf hydr., left, naked, bambini	1
36	2282	Manschette Vo.Bremse, ab 93	brake cylinder cup, '93	2
37	2281	Kolben, Bremszylinder, Vo.Bremse >'93	brake cylinder piston/front-brake'93	2
38	2285	O-Ring 4x2 EPDM	o-ring 4x2 EPDM	1
39	2283	Blindstopfen M10x1 vz.	plug M10x1 zinc coated	1
40	2302	Bremsbelag, Bambini Sz.= 2Stk.	brake pad, set = 2pcs., bambini	1
41	2208	Bremshälfte hydr. re. nackt, BA	brakehalf hydr., right, naked, bambini	1
42	2271	Stellschraube mit Mutter	adjusting screw with nut	2
43	2662	Schraube M6x6 Inbus	hex socket head cap screw M6x6	2
44	2647	Scheibe 6x10x1 Cu	washer 6x10x1 Cu	2
45	1181	Verschraubung M10x1, Winkel	angle screwing M10x1	1
46	2284	Federstift mit Öse	spring pin with lug	1
47	1130	Feder einfach, Bremsbacke	brake return spring	1
48	2671	Schraube M6x50 Inbus	hex socket head cap screw M6x50	4
49	2640	Mutter M6 stop DIN 985	nut M6 stop DIN 985	4

weiter / continued...